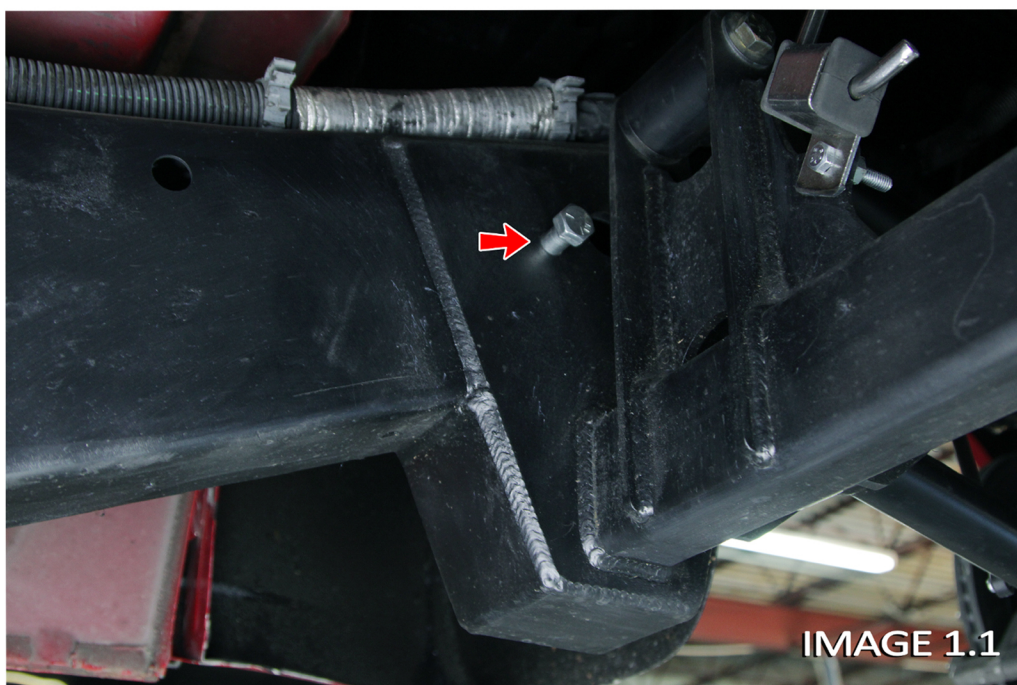


2019+ Silverado/Sierra 1500 Rear Kit



Locating 4-Link Front Crossmember

- 1) Start by removing all factory rear suspension mounts including the factory crossmember in front of the axle.
- 2) Next, slide the 4-Link Front Crossmember onto the frame.
- 3) Locate the 4-Link Front Crossmember using the included Locating Pin that goes into the factory hole in the frame. (Refer to Image 1.1)
- 4) Now tack weld the 4-Link Front Crossmember into place.



2019+ Silverado/Sierra 1500 Rear Kit

Locating 4-Link Axle Brackets

- 1) Measure from the axle housing out 4.625" to locate the inside of the 4-Link Axle brackets.
- 2) Set your Pinion angle and tack weld the brackets into place.
- 3) Bolt in the Link Bars to the axle and to the 4-Link Front Crossmember to make sure everything is squared up.

